



# THE ENTRANCE PENINSULA

## COMMUNITY PRECINCT

ENCOMPASSING: THE ENTRANCE; THE ENTRANCE NORTH; LONG JETTY TOOWOON BAY; BLUE BAY; SHELLY BEACH & MAGENTA

### The Tuggerah Lakes Local Area Command's ( LAC ) Crime Prevention Officer, Senior Constable Murray Alcock 20 July, 2010 at 7:00pm “Update on Law and Order”



**NSW Police Force**  
[www.police.nsw.gov.au](http://www.police.nsw.gov.au)

Senior Constable Murray Alcock introduced himself as a local who lived in The Entrance and had done so for twenty years. Murray is a member of the Toowoon Bay SLSC, an ex member of North Entrance SLSC and the Wyong Golf Club and as a local, living in The Entrance, has a good knowledge of our community.

He works out of the Tuggerah Lakes Local Area Command's office in The Entrance Police Station. The backbone of the NSW Police Force are the Local Area Commands (LAC), your local Police. Here, most officers work as general duties police, detectives, highway patrol officers and in traffic services. They provide a comprehensive, professional community-based policing service.

Murray has had a long career with NSW Police by way of twenty three years service. As a general duties policeman, Murray had a wide range of experience, from tragedies, such as the 1991 Brooklyn train disaster, where he was one of the first Police Officers on the scene when the 3801 steam train was rear ended by a commuter interurban train. To celebrations, such as his secondment to the 1996 Olympic Games in Atlanta, Georgia, USA. Here he worked on security at Conyers, Georgia, about 50 km east of Atlanta where the Equestrian and Mountain Biking events were held. He was able to bring his experience to bear when he was seconded to the Sydney Olympics in 2000.

Murray explained that the Tuggerah Lakes LAC covered an area of 827sq/km. This is one of the largest commands in the State. It's boundaries are close to those of the boundaries of Wyong Shire Council Local Government Area. See attached map of the command. The Tuggerah Lakes LAC has an authorised strength of 204 officers.

The size of the command presents special difficulties to the Police. The social problems of Wyong Shire, headed by high unemployment, low income families, and poor education outcomes was highlighted when Murray explained that Tuggerah Lakes LAC was number two in the State when it came to Domestic Violence. Domestic Violence is a very time consuming activity for Police and limits their ability to always respond to calls in a timely manner.

Murray then presented the crime statistics for our local areas of The Entrance and Long Jetty. He reported on incidents for the last three months from the 12th April, 2010 to 30th June, 2010. This information gave an indication of what was happening locally and keeps the audience informed and up to date.

*[The Wyong Shire Council's State of the Shire report tells us that beside the high rate of Domestic Violence in the Shire, Sexual Assault, Indecent Assault, Break and Enter to Dwellings, Motor Vehicle Theft, Stealing from a Motor Vehicle, Stealing from a Dwelling and Malicious Damage are all above the NSW average rate per 100,000 population.] ( NSW Bureau of Crime Statistics and Research 2009. )*

Murray described the Computerised Operating Police System ( COPS ) that records police reports as well as the Computerised Incident Despatch System ( CIDS ) that is the police radio directed recorded incidents that police respond to. This system priorities the incidents that the Police respond to.

Murray finished his address by referring us to the flyer he had handed out on "**Reporting Crime to the Police**" and gave examples of how timely reporting of incidents is vital to successful Policing. A copy of the flyer is attached. His message was clear and concise: **Report all incidents!**

When Murray invited questions from the audience there were few genuine questions, rather people making statements about their experiences. There was praise for the quick response to some calls for help and criticism where the response had been slow. In the majority of cases, when Murray asked "**Had they immediately reported the incident?**", the answer was **NO!**

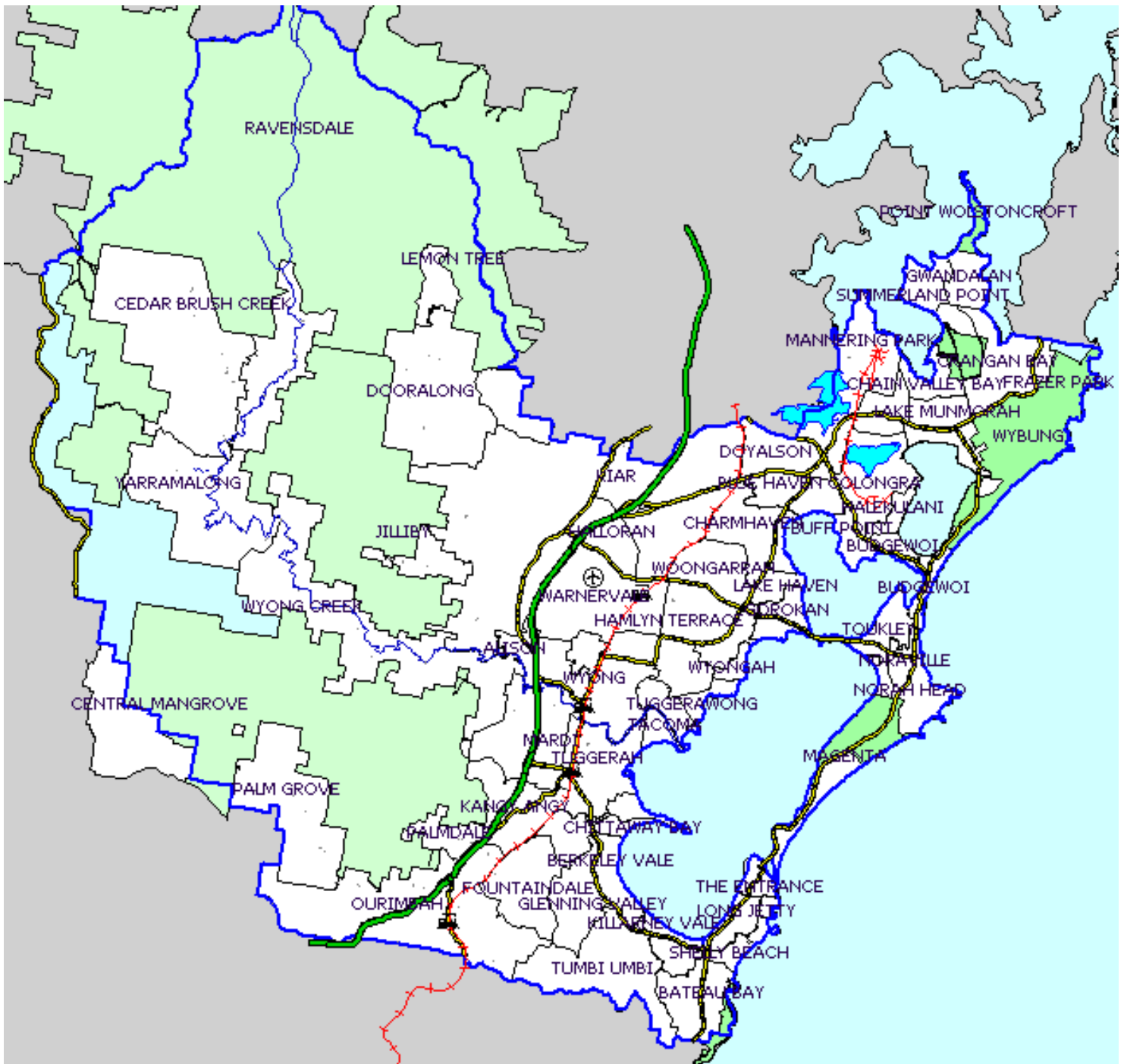
**Murray reinforced the message that when you call to the Police Assistance Line ( PAL 134 444 ) to report an incident you do not have to give your name and address but can do so anonymously.** He advised us not to assume someone else had called it in, because the more reports the Police receive about an incident the better. Unfortunately it seems two thirds of the incidents are not reported.

Charles Harvey thanked Murray on behalf of TEPCP for his interesting presentation and Murray received an enthusiastic round of applause from the twenty four in the audience.

( Following the meeting Murray advised me that he had forgot to mention his involvement with youth. Murray is involved with The Entrance Blue Light Disco. The Entrance Blue Light is one of the longest running Blue Lights in New South Wales, starting back in May, 1983. The Entrance Blue Light is now in it's 27th year of operation, operating on the last Friday of the month out of the Bateau Bay PCYC. Blue Light aims to assist the police to rectify the imbalance of pro-active and re-active policing where young people are concerned. It does this by providing young people with positive lifestyle alternatives and strategies to avoid becoming an offender or victim of crime. )

Doug Darlington note taker.

## TUGGERAH LAKES AREA COMMAND





# NSW POLICE FORCE

## Reporting Crime to Police



There are four ways to report crime in NSW, depending on the nature of the information:

<p style="text-align: center;"><b>000</b> <b>Emergency</b></p>	<p>000 can connect you to Police, Fire or Ambulance, depending on your situation. Only dial this number if you want to <b>report a crime in progress or if it is a life-threatening situation.</b></p>
<p style="text-align: center;"><b>131 444</b> <b>Police Assistance Line</b></p>	<p>You can call PAL to report <b>minor crimes</b> that have already been committed (crimes that are not in progress) and which do not involve traumatised victims or require urgent attention or attendance (eg. Steal from motor vehicle, stolen motor vehicle, graffiti, malicious damage, break and enters and minor motor vehicle accidents.)</p> <p>When you ring PAL, specially trained Customer Service Representatives will take the details of the crime, and make them available to local police through the police computer system for analysis and action if required.</p>
<p style="text-align: center;"><b>1800 333 000</b> <b>Crime Stoppers</b></p>	<p>If you have information about a crime or criminal behaviour, then call Crime Stoppers on this toll free number. Crime Stoppers uses information that members of the public provide to solve crimes and catch offenders. <b>You are guaranteed anonymity and confidentiality</b> and, if your information leads to an arrest, you could receive a reward.</p>
<p style="text-align: center;"><b>4333 2999</b> <b>The Entrance Police</b></p> <p style="text-align: center;"><b>4390 1299</b> <b>Toukley Police</b></p> <p style="text-align: center;"><b>4352 4899</b> <b>Wyong Police</b></p>	<p>You can call or visit your local police station at any time to report a crime. Report a non-life threatening crime in progress.</p>

For further information on reporting crime contact the Crime Prevention Officer, Tuggerah Lakes LAC on 4333 2965.

[www.police.nsw.gov.au](http://www.police.nsw.gov.au)